

# Room Alert™

## Temperature & Environment Monitoring



Monitor: Temperature, Humidity, Power, Water, Smoke, Carbon Monoxide and More...



## Table of Contents

<b>Table of Contents</b> .....	<b>2</b>
Room Alert 3E .....	3
Room Alert 3W Wifi .....	4
Room Alert 4ER .....	5
Room Alert 12ER .....	6
Room Alert 32E .....	8
Room Alert 32W .....	10
<b>Sensors</b> .....	<b>12</b>
Temperature .....	12
Temperature & Humidity .....	12
Temperature & Analogue .....	12
Outdoor Temperature .....	12
Fluid Temperature .....	12
Extreme High Temperature .....	12
Extreme Low Temperature .....	13
Power Fail Sensor .....	13
Mini UPS & Power Sensor (MUPS) .....	13
Current Loop 50A or 250A .....	13
Water Detection including 2.5m cable .....	13
Water Detection including 7m cable .....	13
Water Detection Cable Extension (2.5m) .....	14
Water Detection Spot Sensor .....	14
Water Detection Tiles (600mm x 600mm) .....	14
Smoke .....	14
Air Flow .....	14
Air Flow Sensor (Mounted) NO/NC .....	14
Barometric Air Pressure Sensor .....	15
Room Entry .....	15
Movement Detection .....	15
Water Tank Level Sensor .....	15
Fuel Tank Level Sensor .....	15
Wireless Sensor Hub .....	15
Wireless Sensor Hub Powered Relay .....	16
Sound /Light .....	16
Panic Button .....	16
<b>Accessories</b> .....	<b>17</b>
Relay Module .....	17
Light Tower R/G .....	17
Light Tower R/Y/G with Audio .....	17
Light Tower & Relay Adapter .....	17
GSM Modem w/USB .....	17
Voice Modem w/USB .....	17
Power over Ethernet Active Splitter .....	17
Power over Ethernet Midspan Injector .....	18
Mini UPS & Power Sensor (MUPS) .....	18
Portable Mini UPS (5V, 7.5V, 9V & 12V) .....	18
IEC C14 Power Supply .....	18
Mains IEC C14 to 4-way 13A Multiblock .....	18
Wall Mounting Kit .....	18
Ceiling Mounting Kit .....	18
<b>GoToMyDevices.com</b> .....	<b>19</b>
<b>Device Manager</b> .....	<b>20</b>
Plug-ins Available for Device Manager .....	21

**Room Alert 3E****£158.00**

**Immediate return on investment the very first time it alerts managers about a threatening disaster.**

One of the newest models in Avtech's range of Temperature and Environment Monitors. Room Alert 3E is the smallest, most light weight and inexpensive model of Room Alert to date. At less than 57g and a size of 9.2cm L x 4.4cm W x 1.5cm H, Room Alert 3E includes special features standard on AVTECH's top of the line models. It includes a built-in digital temperature sensor, a digital port allowing connection of any digital sensor or a Light Tower & Relay Adapter, as well as a switch sensor channel that allows connection of any switch sensor or dry contact. Room Alert 3E is Power over Ethernet (PoE) enabled although can also be powered by a 5v 1A power adapter. (just £14). Room Alert 3E comes complete with built-in firmware for monitoring without a PC, AVTECH's Device Manager application software for advanced network-wide monitoring, an SNMP MIB that allows monitoring by any SNMP enabled monitoring software and 2 years Support & Maintenance.

Room Alert 3E is a perfect solution for installations where a small footprint is required, there is no access to electric power, when investment funds are minimal or deployment volume is high.

**Features Include:**

- Power over Ethernet (PoE)
- Built-in Web Server
- Built-in Temperature Sensor
- 1 x External port for Sensor or Light Tower & Relay Adapter
- 1 x Switch Contact Sensor Channel.
- Alerting by Email, Email to SMS, SNMP and more.

**Package Includes:**

- Room Alert 3E
- 1 x Internal Temperature Sensor
- 3m Ethernet Cable
- Device Manager Software (included at no charge)
- BTI's 30 years experience of supporting business critical operations.

**Compatible Sensors:**

- Temperature
- Temperature & Humidity
- Switch Sensor i.e. Power Fail, Smoke, Water etc.
- Light Tower
- Relay Output

**Room Alert 3W** **Wi Fi** **£135.00**

Room Alert 3E is the most popular temperature and environment monitor worldwide. Now that same model is available with Wi-Fi for anyone to use. Room Alert 3 Wi-Fi works anywhere a Wi-Fi connection is available. A very powerful monitor that includes WiFi connection, internal temperature sensor, 1 digital sensor port, 1 switch sensor port, web browser interface, Device Manager software and SNMP Mib. Small size, low weight & inexpensive price makes this model ideal for small spaces and large volume deployments. Perfect for evaluation or test unit.

**Features Include:**

- Connects over WiFi
- Built-in Web Server
- Alerting by Email, Email to SMS, SNMP and more.
- 1 External Temperature or Temperature & Humidity Sensor port +1 Internal Temperature sensor
- 1 switch contact sensor channel.

**Package Includes:**

- Room Alert 3E
- 1 x Internal Temperature Sensor
- Device Manager Software (included at no charge)
- Registration to GoToMyDevices cloud service
- BTI's 30 years experience of supporting business critical operations.

**Compatible Sensors:**

- Temperature
- Temperature & Humidity
- Switch Sensor i.e. Power Fail, Smoke, Water etc.

**Room Alert 4ER****£335.00****£312.00**

(Wall Mount Available)

## Advanced Features, & Low Cost

Room Alert 4ER is one of many solutions for "Computer Room Monitoring, Alerting & Automatic Corrective Action". It is designed specifically to assist with computer room temperature and environment monitoring in multiple locations simultaneously. Room Alert 4ER allows alert notifications via email, email-to-SMS, SNMP and more to devices like computers, mobile phones, pagers and PDAs. Room Alert 4ER offers an easy to use web browser interface for settings changes and viewing real-time temperatures and sensor status from anywhere.

Features include:

- Wall Mount or 1U Rack Mount
- Ethernet 'Plug and Play'
- Built-in Web Server
- Alerting by Email, Email to SMS, SNMP and more
- 1 x Internal Temperature Sensor.
- 2 x External Ports for Temperature or Temperature & Humidity Sensors.
- 1 switch contact sensor channel.
- Light Tower Connector

Room Alert 4ER connects directly to the network and can be located wherever there is an Ethernet connection.

Package Includes:

- Room Alert 4ER
- 1 x Internal Temperature Sensor
- 1 x External Temperature Sensor (inc. 7.5m cable)
- Power Adapter
- 3m Ethernet Cable
- Device Manager Software (included at no charge)
- BTI's 30 years experience of supporting business critical operations.

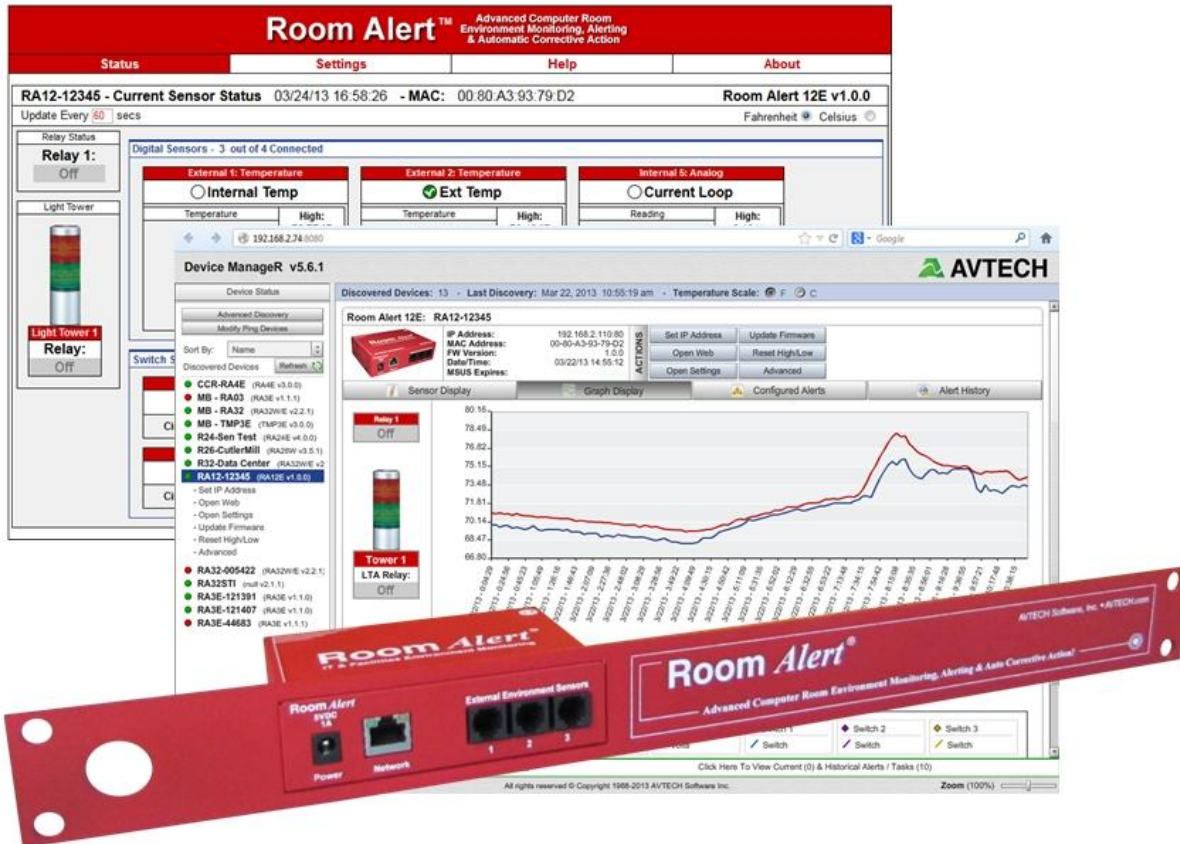
Compatible Sensors:

- Temperature
- Temperature & Humidity
- Switch Sensor i.e. Power Fail, Smoke, Water etc.
- Light Tower

**Room Alert 12ER**

**£505.00**

**(Standalone £489.00)**



## Advanced Features, Extreme Reliability & Midrange Price

The newest model in Avtech's range of Temperature and Environment monitors. Room Alert 12E offers the special features standard on the top of the range 32E model although with a midrange price. It includes a built-in digital temperature sensor, a main power sensor, 3 digital ports, 4 switch sensor channels, a Light Tower & Relay Adapter (LTA) port, low voltage analog port and built-in relay. Room Alert 12E is Power over Ethernet (PoE) enabled although comes with a 5v 1A power adapter.

Features include:

- Wall Mount or 1U Rack Mount
- Power over Ethernet (PoE)
- Built-in Web Server
- Alerting by Email, Email to SMS, SNMP and more.
- 3 x External Temperature or Temperature & Humidity Sensors +1 Internal Temperature sensor
- 4 x Switch Contact Sensor Channels
- 1 x 0-5v Analogue Input
- 1 x Relay Output
- 1 x External port for Light Tower & Relay Adapter

Package Includes:

- Room Alert 12ER
- 1 x Internal Temperature Sensor
- 1 x Temperature Sensor (7.5m cable)
- 1 x Plug-in Power Sensor
- Power Adapter
- Device Manager Software (included at no charge)
- BTI's 30 years experience of supporting business critical operations.

Compatible Sensors & Accessories:

- Temperature
- Temperature & Humidity
- Switch Sensor i.e. Power Fail, Smoke, Water etc.
- Light Tower
- Relay Output

**Room Alert 32E    £736.00**

Room Alert 32E is one of the most advanced hardware solution for "IT & Facilities Environment Monitoring, Alerting & Automatic Corrective Action". It is designed specifically to assist with monitoring computer room temperature, humidity, power, room entry and much more in multiple locations up to 900' away. The Room Alert 32E package allows users to log environment sensor status for immediate alert notification, historical review and graphing. Alert notifications via email, email-to-SMS, SNMP, web page update and more communicate to devices like computers, mobile phones, BlackBerrys and PDAs. Room Alert 32E comes standard in a 1U 19" configuration and offers an easy to use web browser interface for settings changes and viewing real-time sensor status from anywhere.

Features include:

- 1U Rack Mount
- Ethernet 'Plug and Play'
- Built-in Power Over Ethernet (PoE, 802.3af)
- Built-in Web Server
- Alerting by Email, Email to SMS, SNMP and more.
- Up to 8 Connected External Temperature or Temperature & Humidity Sensors
- Up to 16 Connected Switch Contact Sensors.
- 0-5v Analogue Inputs Low Voltage Sensors
- Relay Outputs
- Output Ports to add Relays and Signal Towers
- Internal UPS

Room Alert 32E connects directly to the network and can be located wherever there is an Ethernet connection. Sensor cables can be run inside racks, under floor or in existing containment.

The Room Alert 32E package also includes the 'Windows Plugin Bundle' (Unix/Linux version available if preferred). When used with Device Manager, these plugins provide functionality that can shutdown, reboot and/or log off Windows systems remotely across the network and perform commands or scripted actions when alerts are detected or events occur. These plugins can be used to shutdown, reboot and/or log off an unlimited number of Windows systems... individually, in groups, simultaneously, sequentially or according to a defined schedule.



## Package Includes:

- Room Alert 32E unit
- 1 x Internal Temperature & Humidity Sensor
- 1 x Internal Power Sensor
- Temperature Sensor (inc. 7.5m cable)
- Set of Door Contacts
- Power Adapter
- 3m Ethernet Cable
- Device Manager Software (included at no charge) + 'Windows Plug-in'

## Compatible Sensors:

- Temperature
- Temperature & Humidity
- Switch Sensors i.e. Power Fail, Smoke, Water etc.

Use the built-in web server, bundled Device ManagerR software, or any SNMP application to monitor units network-wide.

The complete Room Alert 32E package allows real-time sensor status, data logging, graphing, advanced alerting, Fahrenheit or Celsius, sensor values in alerts, high and low watermarks and much more.

Use the included 'Windows Plugin Bundle' with Device ManagerR to Shutdown, Log Off and/or Reboot Windows systems remotely across the network (Unix/Linux version available if preferred)

Use Room Alert 32E with or without a host system. That's right... *No PC Required!* This saves money, improves reliability and provides options.

**Room Alert 32W £891.00**

Room Alert 32W is the most advanced Room Alert solution for environmental monitoring in Server Rooms, Computer Rooms and Data Centres. It is designed to monitor Temperature, Humidity, Power, Water and much more using wireless technology to avoid running cables. Room Alert 32W's Wireless Sensor Hubs (WISH) communicate via a secure, private protocol that is ZigBee compatible allowing large numbers of sensors to be monitored up to 75 metres away.

Room Alert 32W will alert via email, email to SMS, SNMP and more. With its built-in web server, real-time environmental monitoring, set-up and configuration can be carried out via standard browser software

Features include:

- 1U Rack Mount
- Ethernet 'Plug and Play'
- Built-in Web Server
- Alerting by Email, Email to SMS, SNMP and more.
- Up to 8 Connected External Temperature or Temperature & Humidity Sensors
- Up to 16 Connected Switch Contact Sensors.
- Up to 30 Sensors via Wireless Sensor Hubs (WISH's)
- 0-5V Analogue Inputs for Low Voltage Sensors
- Relay Outputs
- Internal UPS

Each WISH includes 1 x internal Temperature sensor, 2 x Sensor ports (Temperature/Humidity) and 1 x Switch sensor.

Room Alert 32W connects directly to the network and can be located wherever there is an Ethernet connection. Sensor cables can be run inside racks, under floor or in existing containment.

## Package Includes:

- Room Alert 32W
- 1 x Internal Temperature & Humidity Sensor
- 1 x Internal Power Sensor
- Temperature Sensor (inc. 7.5m cable)
- 1 x Room Entry Sensor
- 1 x Wireless Sensor Hub (WiSH)
- Power Adapter
- 3m Ethernet Cable
- Device Manager Software (included at no charge)
- BTI's 30 years experience of supporting business critical operations.

## Compatible Sensors:

- Temperature
- Temperature & Humidity
- Current Loop
- Switch Sensors i.e. Power Fail, Smoke, Water etc.
- Wireless Sensor Hub (WiSH)
- Light Tower
- Relay Output

Use the built-in web server, bundled Device Manager software, or any SNMP application to monitor units network-wide.

The complete Room Alert 32W package allows real-time sensor status, data logging, graphing, advanced alerting, Fahrenheit or Celsius, sensor values in alerts, high and low watermarks and much more.

Use the included 'Windows Plugin Bundle' with Device Manager to Shutdown, Log Off and/or Reboot Windows systems remotely across the network (Unix/Linux version available if preferred)  
Use Room Alert 32E with or without a host system. That's right... *No PC Required!* This saves money, improves reliability and provides options.

## Sensors

	<p style="text-align: center;"><b>Temperature</b></p> <ul style="list-style-type: none"> <li>• Temperature range from -55 deg C to 125 deg C.</li> <li>• Supplied with 7.5m, 15m or 30m cable.</li> <li>• Compatible with all Room Alert models.</li> </ul>	<p style="text-align: center;"><u>Cable</u></p>	<table border="0"> <tr><td style="text-align: right;">7.5m</td><td style="text-align: left;">£39.00</td></tr> <tr><td style="text-align: right;">15m</td><td style="text-align: left;">£53.00</td></tr> <tr><td style="text-align: right;">30m</td><td style="text-align: left;">£78.00</td></tr> </table>	7.5m	£39.00	15m	£53.00	30m	£78.00
7.5m	£39.00								
15m	£53.00								
30m	£78.00								
	<p style="text-align: center;"><b>Temperature &amp; Humidity</b></p> <ul style="list-style-type: none"> <li>• Temperature range from -55 deg C to 125 deg C.</li> <li>• Relative Humidity range from 0-100%</li> <li>• Supplied with 7.5m, 15m or 30m cable.</li> <li>• Compatible with all Room Alert models.</li> </ul>	<p style="text-align: center;"><u>Cable</u></p>	<table border="0"> <tr><td style="text-align: right;">7.5m</td><td style="text-align: left;">£75.00</td></tr> <tr><td style="text-align: right;">15m</td><td style="text-align: left;">£87.00</td></tr> <tr><td style="text-align: right;">30m</td><td style="text-align: left;">£108.00</td></tr> </table>	7.5m	£75.00	15m	£87.00	30m	£108.00
7.5m	£75.00								
15m	£87.00								
30m	£108.00								
	<p style="text-align: center;"><b>Temperature &amp; Analogue</b></p> <ul style="list-style-type: none"> <li>• Connects to digital sensor input on Room Alert monitor</li> <li>• Temperature range from -55 deg C to 125 deg C.</li> <li>• Analogue input (0-5VDC)</li> <li>• Compatible with all Room Alert models.</li> </ul>		<p style="text-align: right;">£75.00</p>						
	<p style="text-align: center;"><b>Outdoor Temperature</b></p> <ul style="list-style-type: none"> <li>• Temperature range from -55 deg C to 125 deg C.</li> <li>• Accuracy within +/- 0.125 degrees.</li> <li>• Silicon Coating for Outdoor and Harsh Environments.</li> <li>• Supplied with 7.5m, 15m or 30m cable.</li> <li>• Compatible with all Room Alert models.</li> </ul>	<p style="text-align: center;"><u>Cable</u></p>	<table border="0"> <tr><td style="text-align: right;">7.5m</td><td style="text-align: left;">£46.00</td></tr> <tr><td style="text-align: right;">30m</td><td style="text-align: left;">£58.00</td></tr> <tr><td style="text-align: right;">15m</td><td style="text-align: left;">£79.00</td></tr> </table>	7.5m	£46.00	30m	£58.00	15m	£79.00
7.5m	£46.00								
30m	£58.00								
15m	£79.00								
	<p style="text-align: center;"><b>Fluid Temperature</b></p> <ul style="list-style-type: none"> <li>• Real-time Temperature from -55 deg C to 125 deg C.</li> <li>• Accuracy within +/- 0.125 degrees.</li> <li>• Sealed Tube containing Propylene Gel to monitor refrigerated items.</li> <li>• Compatible with all Room Alert models.</li> </ul>	<p style="text-align: center;"><u>Cable</u></p>	<table border="0"> <tr><td style="text-align: right;">7.5m</td><td style="text-align: left;">£75.00</td></tr> <tr><td style="text-align: right;">30m</td><td style="text-align: left;">£87.00</td></tr> <tr><td style="text-align: right;">15m</td><td style="text-align: left;">£108.00</td></tr> </table>	7.5m	£75.00	30m	£87.00	15m	£108.00
7.5m	£75.00								
30m	£87.00								
15m	£108.00								
	<p style="text-align: center;"><b>Extreme High Temperature</b></p> <ul style="list-style-type: none"> <li>• Real-time high temperature sensor</li> <li>• Temperature range from -40 deg C to 395 deg C</li> <li>• Analogue, 1-5 VDC</li> <li>• Sensor standardisation Dn IEC 751 Class B.</li> <li>• Compatible with Room Alert 32E/W, 12E and Temperature &amp; Analogue sensor.</li> </ul>		<p style="text-align: right;">£229.00</p>						

## Sensors Continued

	<p style="text-align: center;"><b>Extreme Low Temperature</b></p> <ul style="list-style-type: none"> <li>• Real-time high temperature sensor</li> <li>• Temperature range from -200 deg C to 0 deg C</li> <li>• Analogue, 1-5 VDC</li> <li>• Sensor standardisation Dn IEC 751 Class B.</li> <li>• Compatible with Room Alert 32E/W, 12E and Temperature &amp; Analogue sensor.</li> </ul>	<p style="text-align: right;">£229.00</p>
	<p style="text-align: center;"><b>Power Fail Sensor</b></p> <ul style="list-style-type: none"> <li>• Real-time power on/off status.</li> <li>• Monitors UPS or single phase power.</li> <li>• Max sensor cable 275m (supplied with 15m).</li> <li>• Compatible with all Room Alert models.</li> </ul>	<p style="text-align: right;">£46.00</p>
	<p style="text-align: center;"><b>Mini UPS &amp; Power Sensor (MUPS)</b></p> <ul style="list-style-type: none"> <li>• Real-time power on/off status.</li> <li>• Battery backup power for any 5V device</li> <li>• Provides 15minutes runtime for Room Alerts in the event of a power fail.</li> </ul>	<p style="text-align: right;">£100.00</p>
	<p style="text-align: center;"><b>Current Loop 50A or 250A</b></p> <ul style="list-style-type: none"> <li>• Real-time current monitoring</li> <li>• Split Core</li> <li>• Compatible with Room Alert 32E/W, 12E and Temperature &amp; Analogue sensor</li> </ul>	<p style="text-align: right;">£71.00</p>
	<p style="text-align: center;"><b>Water Detection including 2.5m cable</b></p> <ul style="list-style-type: none"> <li>• Real-time water detection.</li> <li>• 2.5m detection cable with 7.5m leader cable and Control Box.</li> <li>• Alert triggered when water detected or power lost.</li> <li>• Detection cable can be extended in 2.5m lengths.</li> <li>• Compatible with all Room Alert models.</li> </ul>	<p style="text-align: right;">£212.00</p>
	<p style="text-align: center;"><b>Water Detection including 7m cable</b></p> <ul style="list-style-type: none"> <li>• Real-time water detection.</li> <li>• 7m detection cable with 7.5m leader cable and Control Box.</li> <li>• Alert triggered when water detected or power lost.</li> <li>• Detection cable can be extended in 2.5m lengths.</li> <li>• Compatible with all Room Alert models.</li> </ul>	<p style="text-align: right;">£316.00</p>




## Sensors Continued

	<p style="text-align: center;"><b>Water Detection Cable Extension (2.5m)</b></p> <ul style="list-style-type: none"> <li>• Extend the length of Water Detection cable.</li> <li>• Requires connection in-line between existing detection cable and sensor module.</li> </ul>	<p style="text-align: right;">£104.00</p>
	<p style="text-align: center;"><b>Water Detection Spot Sensor</b></p> <ul style="list-style-type: none"> <li>• Real-time recognition of water under pod.</li> <li>• Ideal for under vending machines, sinks etc.</li> <li>• Battery powered (battery included).</li> <li>• Compatible with all Room Alert models.</li> </ul>	<p style="text-align: right;">£171.00</p>
	<p style="text-align: center;"><b>Water Detection Tiles (600mm x 600mm)</b></p> <ul style="list-style-type: none"> <li>• Ideal for above ceiling tiles.</li> <li>• Tiles can be daisy chained.</li> <li>• Individual Tile Alarms (Option).</li> <li>• Compatible with all Room Alert models. (Separate alarm panel required)</li> </ul>	<p style="text-align: right;">£81.00 Call for System quote</p>
	<p style="text-align: center;"><b>Smoke Sensor</b></p> <ul style="list-style-type: none"> <li>• Real-time monitoring of smoke/fire</li> <li>• Audible alert and escape light when triggered</li> <li>• Max sensor cable 275m, supplied with 15m.</li> <li>• Compatible with Room Alert models 32W, 32E, 26W, 26WO, 24E, 12E, 11E, 7E, 4E, 3E &amp; 3W.</li> </ul>	<p style="text-align: right;">£62.00</p>
	<p style="text-align: center;"><b>Air Flow Sensor (Fly Lead) NO/NC</b></p> <ul style="list-style-type: none"> <li>• Real-time monitoring of air flow stop/start.</li> <li>• Ideal for Air Con. Systems, Server Fans etc.</li> <li>• Max sensor cable 275m, supplied with 15m.</li> <li>• Compatible with all Room Alert models.</li> </ul>	<p style="text-align: right;">£ 33.00</p>
	<p style="text-align: center;"><b>Air Flow Sensor (Mounted) NO/NC</b></p> <ul style="list-style-type: none"> <li>• Real-time monitoring of air flow stop/start.</li> <li>• Wall, Ceiling or Conduit box mounting</li> <li>• Flexible arm for positioning</li> <li>• Max sensor cable 275m, supplied with 15m.</li> <li>• Compatible with all Room Alert models.</li> </ul>	<p style="text-align: right;">£63.00</p>

## Sensors Continued

	<p style="text-align: center;"><b>Barometric Air Pressure Sensor</b></p> <ul style="list-style-type: none"> <li>• Pressure Range 20.8 to 32 Hg (10.2 to 15.7 psi)</li> <li>• Output User selectable 4-20ma or 1-5VDC</li> <li>• Compatible with Room Alert 32E/W, 12E and Temperature &amp; Analogue sensor</li> </ul>	<p>£155.00</p>
	<p style="text-align: center;"><b>Room Entry Sensor</b></p> <ul style="list-style-type: none"> <li>• Real-time monitoring of door or cabinet open/closed.</li> <li>• Max sensor cable 275m, supplied with 15m.</li> <li>• Compatible with all Room Alert models.</li> </ul>	<p>£ 21.00</p>
	<p style="text-align: center;"><b>Movement Detection</b></p> <ul style="list-style-type: none"> <li>• Detects movement up to 12m within 90 degree angle</li> <li>• Max sensor cable 275m, supplied with 15m.</li> <li>• Compatible with all Room Alert models</li> </ul>	<p>£37.00</p>
	<p style="text-align: center;"><b>Water Tank Level Sensor</b></p> <ul style="list-style-type: none"> <li>• Real-time recognition of water level rise or fall past specific level.</li> <li>• Indicates leaks, flooding or need to refill water tank.</li> <li>• Includes 7.5m cable, can be extended up to 275m</li> <li>• Available as Normally Closed (NC) and Normally Open (NO).</li> <li>• Compatible with all Room Alert models.</li> </ul>	<p>£162.00</p>
	<p style="text-align: center;"><b>Fuel Tank Level Sensor</b></p> <ul style="list-style-type: none"> <li>• Real-time recognition of fuel level rise or fall past specific level.</li> <li>• Indicates leaks, flooding or need to refill fuel tank.</li> <li>• Includes 7.5m cable, can be extended up to 275m</li> <li>• Available as Normally Closed (NC) and Normally Open (NO).</li> <li>• Compatible with all Room Alert models</li> </ul>	<p>£187.00</p>
	<p style="text-align: center;"><b>Wireless Sensor Hub (WiSH) Powered</b></p> <ul style="list-style-type: none"> <li>• Wireless Communication with Sensors up to 75m.</li> <li>• Built-in Temperature sensor</li> <li>• 2 sensor ports, 1 switch sensor channel.</li> <li>• Compatible with Room Alert models 32W &amp; 26W.</li> </ul>	<p>£97.00</p>

## Sensors Continued

	<p style="text-align: center;"><b>Wireless Sensor Hub Powered Relay</b></p> <ul style="list-style-type: none"> <li>• Relay sensor data between WiSH/WiSPR sensors and the Room Alert monitoring system (up to 100m)</li> <li>• Built-in Temperature sensor</li> <li>• 2 sensor ports, 1 switch sensor channel.</li> <li>• Compatible with Room Alert models 32W &amp; 26W.</li> </ul>	<p>£121.00</p>
	<p style="text-align: center;"><b>Sound /Light Sensor</b></p> <ul style="list-style-type: none"> <li>• Real-time recognition of sound, light and/or door entry.</li> <li>• Max sensor cable 275m, supplied with 15m.</li> <li>• Compatible with all Room Alert models.</li> </ul>	<p>£62.00</p>
	<p style="text-align: center;"><b>Panic Button</b></p> <ul style="list-style-type: none"> <li>• Provide warning where someone is working and needs help</li> <li>• Max sensor cable 275m, supplied with 15m.</li> <li>• Compatible with all Room Alert Models.</li> </ul>	<p>£175.00</p>



## Accessories

	<p style="text-align: center;"><b>Relay Module</b></p> <ul style="list-style-type: none"> <li>• 4 x Relay Outputs</li> <li>• Compatible with Room Alert 4E Directly</li> <li>• Compatible with Room Alert models 32E/W, 12E &amp; 3E via Light Tower Adapter.</li> </ul>	<p style="text-align: right;">£113.00</p>
	<p style="text-align: center;"><b>Light Tower R/G</b></p> <ul style="list-style-type: none"> <li>• R/G Lights</li> <li>• Compatible with Room Alert 4E Direct Connect</li> <li>• Compatible with Room Alert Models 32W, 32E, 12E &amp; 3E via Light Tower Adapter</li> </ul>	<p style="text-align: right;">£171.00</p>
	<p style="text-align: center;"><b>Light Tower R/Y/G with Audio</b></p> <ul style="list-style-type: none"> <li>• R/Y/G Lights + Audio</li> <li>• Compatible with Room Alert 4E Direct Connect</li> <li>• Compatible with Room Alert Models 32W, 32E, 12E &amp; 3E.</li> </ul>	<p style="text-align: right;">£253.00</p>
	<p style="text-align: center;"><b>Light Tower &amp; Relay Adapter</b></p> <ul style="list-style-type: none"> <li>• Allows Light Tower or Relay Module to be connected to Room Alert models 32E/W, 12E &amp; 3E.</li> <li>• Connects to Room Alert ID box via RJ11.</li> <li>• Relay supports 0.3A at 125VAC or 1A at 24VDC</li> </ul>	<p style="text-align: right;">£62.00</p>
	<p style="text-align: center;"><b>GSM Modem w/USB</b></p> <ul style="list-style-type: none"> <li>• Air Interface GSM / GPRS</li> <li>• USB Connection</li> <li>• Requires SIM</li> <li>• Requires Device Manager Dial-Out Plug-in</li> </ul>	<p style="text-align: right;">£150.00</p>
	<p style="text-align: center;"><b>Voice Modem w/USB</b></p> <ul style="list-style-type: none"> <li>• 1 x USB &amp; 1 x RJ11 Connection</li> <li>• Spoken Alert Messages from Device Manager</li> <li>• Requires Device Manager Dial-Out Plug-in</li> </ul>	<p style="text-align: right;">£40.00</p>
	<p style="text-align: center;"><b>Power over Ethernet Active Splitter</b></p> <ul style="list-style-type: none"> <li>• Allows easy integration of Power over Ethernet (PoE) for a non PoE enabled Room Alert monitor.</li> <li>• Use with a non PoE Room Alert monitor on a PoE enabled network.</li> <li>• Compatible with Room Alert models 26E/W, 24E, 11E, 7E &amp; 4E.</li> </ul>	<p style="text-align: right;">£62.00</p>

## Accessories Continued

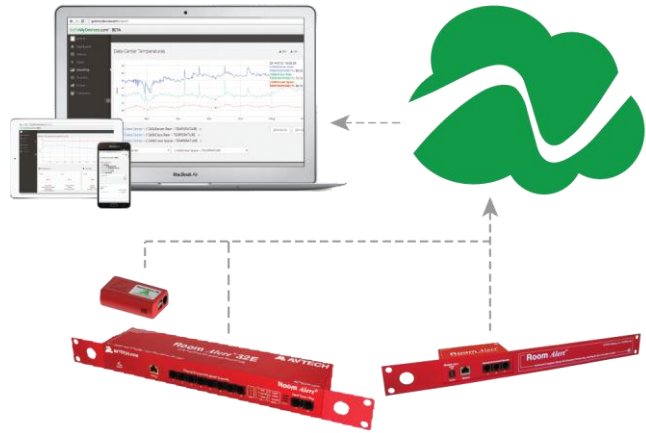
	<p style="text-align: center;"><b>Power over Ethernet Midspan Injector</b></p> <ul style="list-style-type: none"> <li>• Allows easy integration of Power over Ethernet (PoE) for a PoE enabled Room Alert monitor.</li> <li>• Use in-line with a PoE powered Room Alert monitor when a network is not PoE enabled.</li> <li>• Compatible with Room Alert models 32E/W, 12E &amp; 3E.</li> </ul>	<p>£62.00</p>
	<p style="text-align: center;"><b>Mini UPS &amp; Power Sensor (MUPS)</b></p> <ul style="list-style-type: none"> <li>• Real-time power on/off status.</li> <li>• Battery backup power for any 5V device</li> <li>• Provides 15minutes runtime for Room Alerts in the event of a power fail.</li> </ul>	<p>£100.00</p>
	<p style="text-align: center;"><b>Portable Mini UPS (5V, 7.5V, 9V &amp; 12V)</b></p> <ul style="list-style-type: none"> <li>• Li battery 4400mAH or 8800mAH</li> <li>• Selectable outputs 5V, 7.5V, 9V and 12V (Slide switch)</li> <li>• USB Port 5V 1A</li> <li>• Input Voltage :100 -240VAC</li> <li>• Provides 14+ Hours backup for Room Alert systems</li> </ul>	<p>4.4AH    £55.00 8.8AH    £75.00</p>
	<p style="text-align: center;"><b>IEC C14 Power Supply</b></p> <ul style="list-style-type: none"> <li>• Input Range 100-240V AC 50-60Hz. 0.5A</li> <li>• Input Connector 3 pin IEC320, C14</li> <li>• Power On LED Indicator</li> <li>• Compatible with all Room Alert models</li> </ul>	<p>£28.00</p>
	<p style="text-align: center;"><b>Mains IEC C14 to 4-way 13A Multiblock</b></p> <ul style="list-style-type: none"> <li>• Moulded IEC plug (C14).</li> <li>• 4 x UK style 13A sockets</li> <li>• Power LED and Fuse OK LED indicators.</li> <li>• 3m Cable</li> <li>• PAT tested and CE approved.</li> </ul>	<p>£ 19.99</p>
	<p style="text-align: center;"><b>Wall Mounting Kit</b></p> <ul style="list-style-type: none"> <li>• Compatible with Room Alert 12E, 11E, 4E &amp; TemPageR.</li> </ul>	<p>£ 13.00</p>
	<p style="text-align: center;"><b>Ceiling Mounting Kit</b></p> <ul style="list-style-type: none"> <li>• Compatible with Room Alert 12E, 11E, 4E &amp; TemPageR.</li> </ul>	<p>£ 17.00</p>

## GoToMyDevices.com

Manage Devices... *Anywhere... Anytime!* Easily,  
Conveniently and Securely through the Cloud

GoToMyDevices is a cloud service designed to make it easy to monitor temperature and environmental conditions from anywhere, at any time, through the cloud via the web. Enjoy the same alert interface from any device.

GoToMyDevices is designed specifically to assist with monitoring temperature and other environmental conditions without the worries of installing software, configuring an email server, configuring network settings, allocating disk storage, or running regular data backups. GoToMyDevices handles all of this automatically in the cloud, with a user experience that is always consistent whether on a desktop, laptop, tablet or mobile device.



GoToMyDevices logs all sensor data for historical review, analysis and verification. This eliminates the need for users to manage data for long term access and backup. Easy CSV export allows in-house data collection and local manipulation to meet regulatory reporting requirements or management objectives. Users can easily display values over time on a graph for any of their connected devices. Time and date ranges are adjustable and interactive with zoom features to explore data at detailed levels. An export to PDF option allows snapshot views to be created and saved on the fly.

Reports can be easily created for different device types, groups of devices, teams, locations and other criteria. Reports can pull data from any sensor or Room Alert device network-wide, allowing side-by-side comparisons within a graph, and providing complete flexibility as to what can be included within a report. Using reports enables managers to get the view and insight they need and want on a regular basis for better decision making, faster response, and planning. This leads to greater uptime for organizations, lower meantime between hardware failures, and smarter energy consumption.

Alerts are easy to configure and do not require access to an email server or other external service. Simply enter the desired email or SMS address to notify and the conditions that should trigger an alert and GoToMyDevices will do the rest. GoToMyDevices allows users to get notified and respond appropriately before alert conditions impact their operations or facilities. This provides peace-of-mind for users who can be assured that all is well when they are away.

With its ease of use, advanced capabilities and affordable price, AVTECH expects GoToMyDevices to quickly become the most trusted and dependable method for monitoring temperature and environmental conditions monitored by Room Alert. Register today and get started now at <http://GoToMyDevices.com>.

## Device Manager



Device ManagerR software package comes 'FREE' with the purchase of any Room Alert environment monitoring solution. Device ManagerR is an all-in-one solution for the discovery, management, monitoring, alerting, logging, graphing, automatic action and more of Room Alert systems, Axis network cameras and more. Complete with its unique range of features, Device ManagerR runs as a Windows Service (for security) and will continuously and automatically discover Room Alert and TemPageR devices network-wide and display multiple units through a single IP address. Multi-use access is available through Device ManagerR's web interface, accessible from anywhere.

Ideal for managing multiple deployments or single units, Device ManagerR includes powerful features that allow users to send alert notifications when issues or events occur across the network. Device ManagerR allows for unlimited alerting of customizable alert and alert clear notifications to individuals and groups, hierarchies, dependencies and scheduling. It also allows for actions on alert/alert clear conditions such as toggling Signal Tower LED lights, sending Web URL requests, sending screenshot images from Axis network cameras and more. All this is possible through a single installation, with no rules and no agents.



Device ManagerR greatly enhances the value of AVTECH's monitors, making it easier for users with multiple Room Alert and TemPageR units to monitor and document environment conditions, improve reliability, and decrease unplanned downtime or costly hardware replacement. Device ManagerR also provides unlimited discovery of Axis network cameras and acts as a single IP web interface for viewing real-time images for individual, groups or all Axis cameras found across the network.

## Plug-ins Available for Device Manager

### Super Bundle (Windows, Unix/Linux, Dial Out)



- Force Power-Down, Reboot, Log Off, Dial Out & Advanced Reporting Actions for unlimited systems remotely across the network.

### Windows Bundle (Shutdown, Reboot, Log Off, Script/Command)



- Force Power-Down, Reboot, Log Off, Scripting and/or Audible Alerting Actions for unlimited Windows Systems remotely Across the network.

### Unix/Linux Bundle (Shutdown, Reboot, Command)



- Force Power-Down, Reboot and/or Execute Commands for unlimited Unix/Linux Systems remotely across the network.

### Dial Out Bundle (GSM, Text, Voice)



- Send Text Messages To A Phone Via A GSM Modem, A Regular Modem, Directly Dial A Phone To Play Dial Tones, Or Dial Out With Voice.

### Report Generator



- Schedule Email Messages to Configured Contacts with Status Updates and Advanced Statistics on Discovered Devices, Alerts Detected remotely across the network

These plug-ins are ideal for use when conditions in a computer room or data center environment escalate and put computer systems and other expensive IT equipment at risk such as extreme temperature, extreme humidity, main power loss, flood, smoke/fire, security break-ins and other conditions. Device ManageR can send notifications without any user interaction both automatically and immediately, saving expensive equipment from damage caused by environment extremes that go unchecked.

Full Installation including System Set-up, Configuration and Test can be provided with all products. Call NOW on 01527 598500 or email [info@bticomputer.com](mailto:info@bticomputer.com) for details.